

Inside Outside

THE INDIAN DESIGN MAGAZINE

www.insideoutside.in

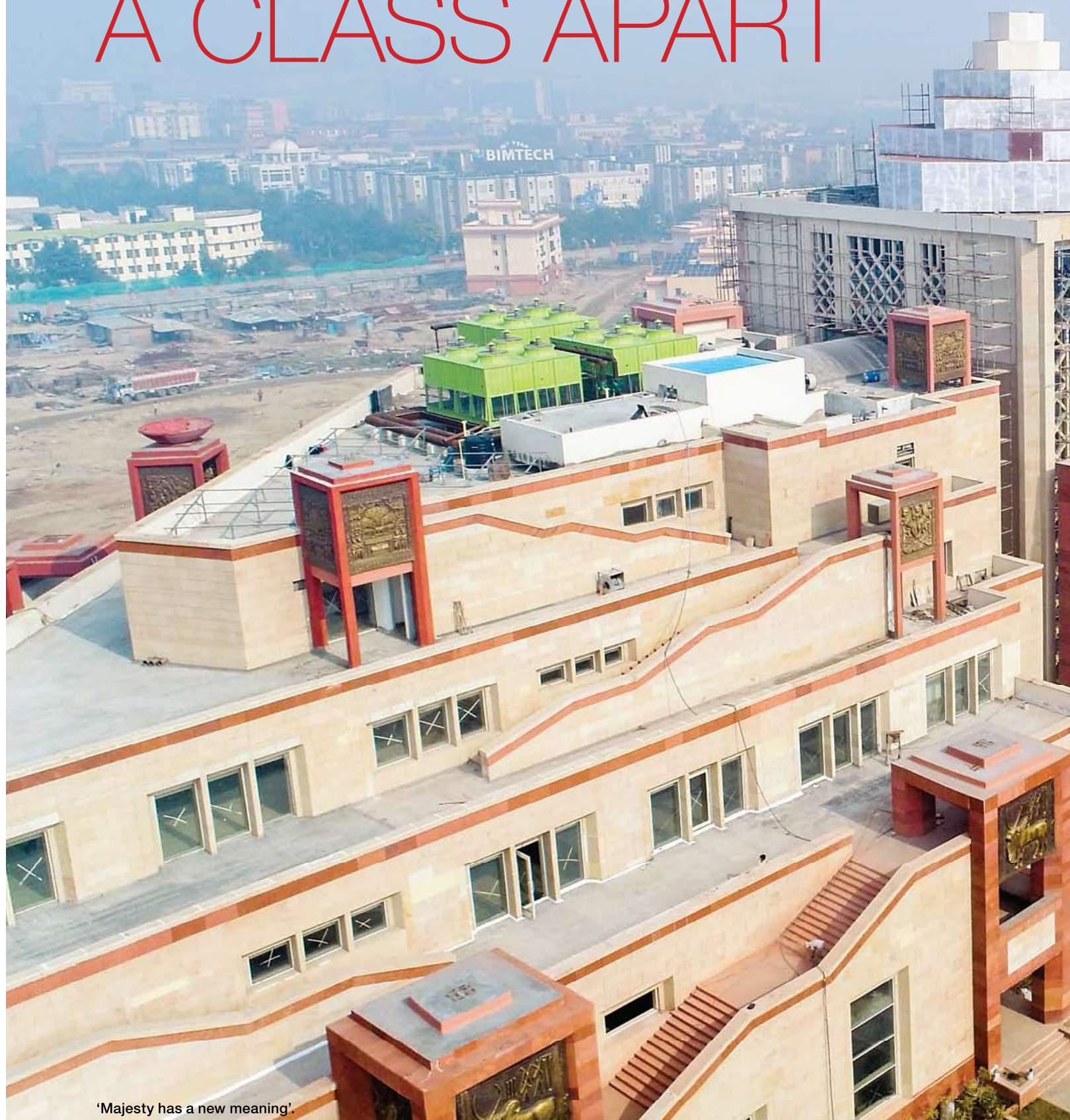
ISSUE 411

DECEMBER 2019

₹100

**Pandit Deen Dayal Upadhyaya Institute of Archaeology
– an architectural wonder**

A CLASS APART



'Majesty has a new meaning'.

institution

**Design Forum International blends the traditional with the modern to create the majestic
Pandit Deen Dayal Upadhyaya Institute of Archaeology**

TEXT: DEVINA CHANDOLA PHOTOGRAPHER: NARENDRA SHARMA





'Spirituality
and Elegance'.



'Entrance
starts one
on a journey
into space for
learning and
positivity'.



'Pillars add grandeur to the structural beauty of the campus'.

The Design Forum International (DFI), an award-winning architectural consultancy firm, has recently added a spectacular institution to the list of its architectural wonders. It is the magnificent Pandit Deen Dayal Upadhyaya Institute of Archaeology located at the heart of Greater Noida, Uttar Pradesh. The administrative and academic campus is built on a 25-acre, splendid property.

Elements of exuberance

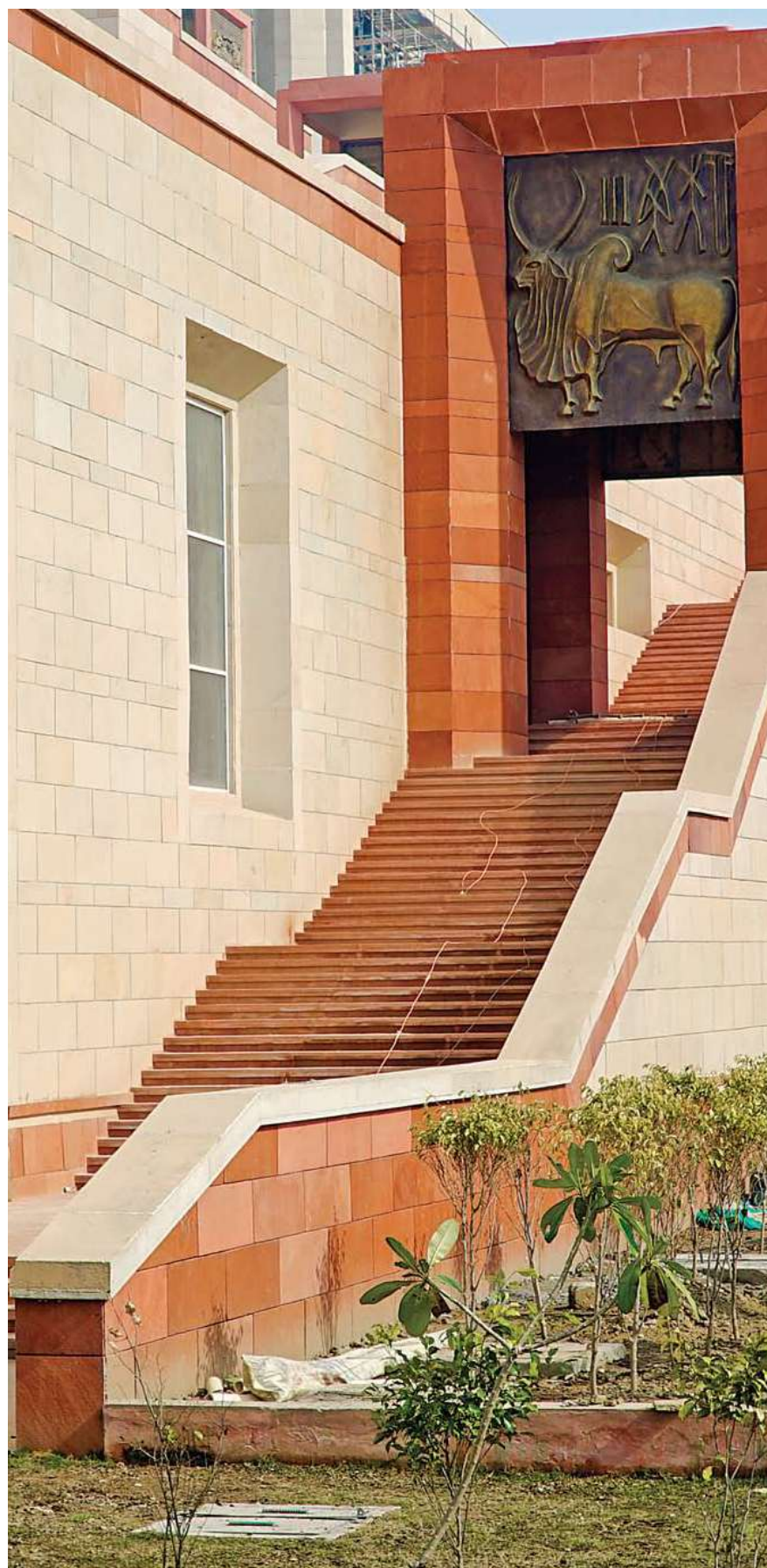
The project houses a variety of architectural marvels centred on the theme of archival India. The total built-up area of one phase is 5.6 lakh sq ft, enabling a structure as large as this museum of archaeology with elaborate attendant facilities like archival sections, restoration laboratories, and cafeterias. The vast landscape incorporates an

auditorium with a capacity of around 900, a well-equipped library for researchers and officials, a mini-convention centre for up to 300 people and offices of ASI officials and governing bodies, all designed and customised to perfection. The campus has a residential area with a variety of accommodation options. A range of staff quarters promises comfort and efficiency. The property includes a lavish residence for the Director-General as well. It also hosts a well-planned guest house-cum-hostel facility for visiting dignitaries as well as ASI officials undergoing academic program training. The structure provides ample housing and accommodation facilities.

Sticking to the roots

Simple yet chic are the two words that define this property. Design Forum International uses the ancient





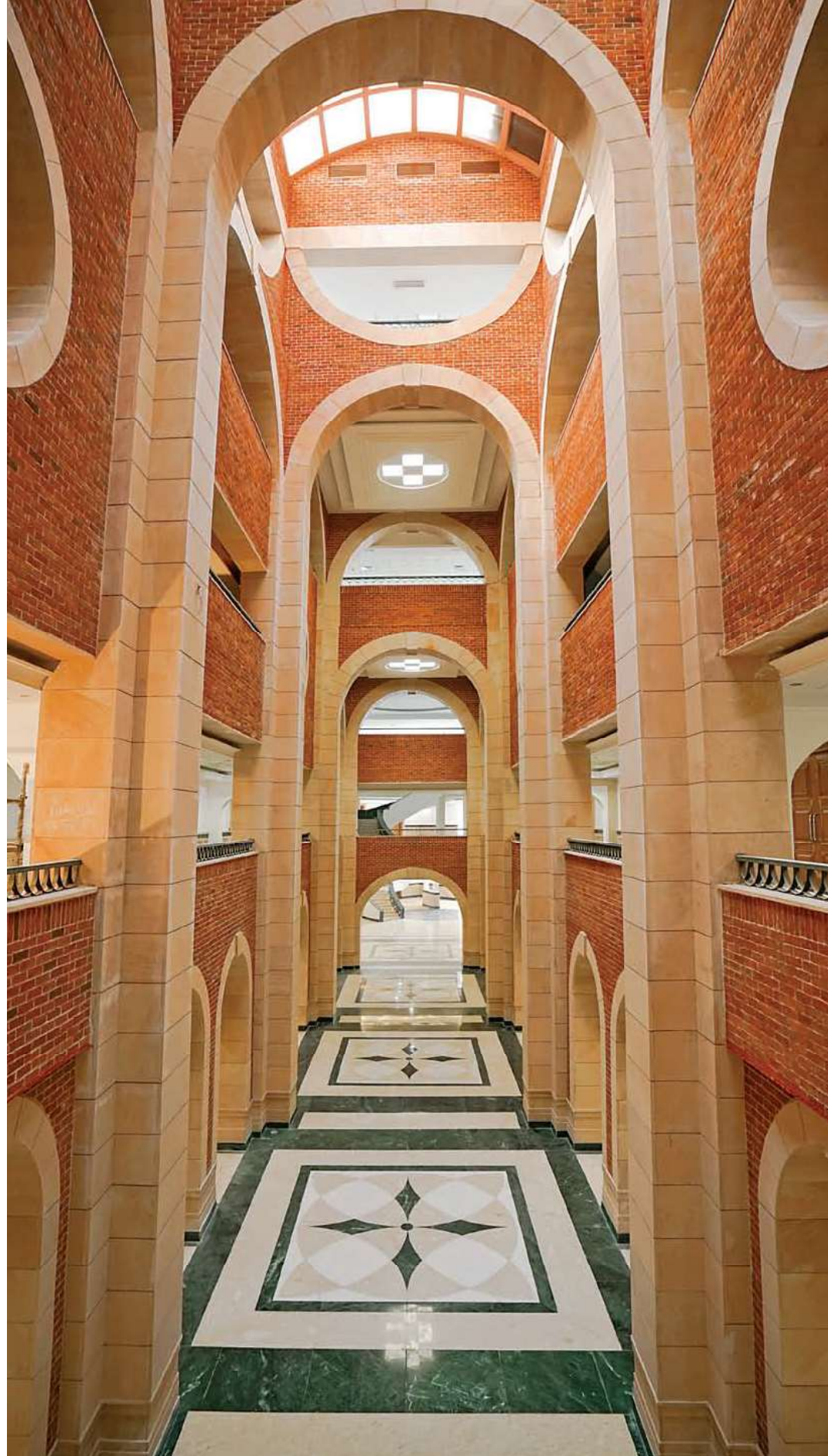
For students and visitors, these regal staircases add an inimitable element.

principles of Vastu Shastra to create a visual masterpiece adorned with imagery and symbolism. The whole site was divided into nine squares – essentially three rows of three squares, each being roughly 100m by 100m. The central square has been left open as a large green space (*brahmsthan*) and connects all the buildings, along with the peripheral squares, both visually and physically. The Director General's residence, the *sanchalak* of the campus, is situated in the northeast square – there is a lawn at the northeast



The structure manifests principles of Vastu Shastra to create an upbeat ambience'.





Widening corridors and elegant pillars add ornamental beauty.



corner. The museum, which is the largest and tallest building on the campus, is on the south side and has a centrally placed entrance with a grand dome and stepped pyramidal crown (which captures cosmic energy and showers it inside the building).

One of the key elements of the plan is the notion of universal accessibility. The entire campus is pedestrian-friendly and all the buildings are connected through the vehicle-free central green. It is commendable that the design of the institution stands true to its core principles and assists people with special needs with special parking slots and pathways.



Accessibility is well-defined through modern design and traditional structure.





Directors R-L: Anoj Tevatia, Anand Sharma and Goonmeet S Chauhan

FACT FILE

Name of Project

Pandit Deen Dayal Upadhyaya
institute of Archaeology

Location

Greater Noida

Name of Client

Archaeological Survey of India

Name of Client's Firm

Archaeological Survey of India

Principal Architect

Design Forum International

Design Team

VIKAS

Site Area

101074.30 sq m

Built-Up Area

51190 sq m

Start Date

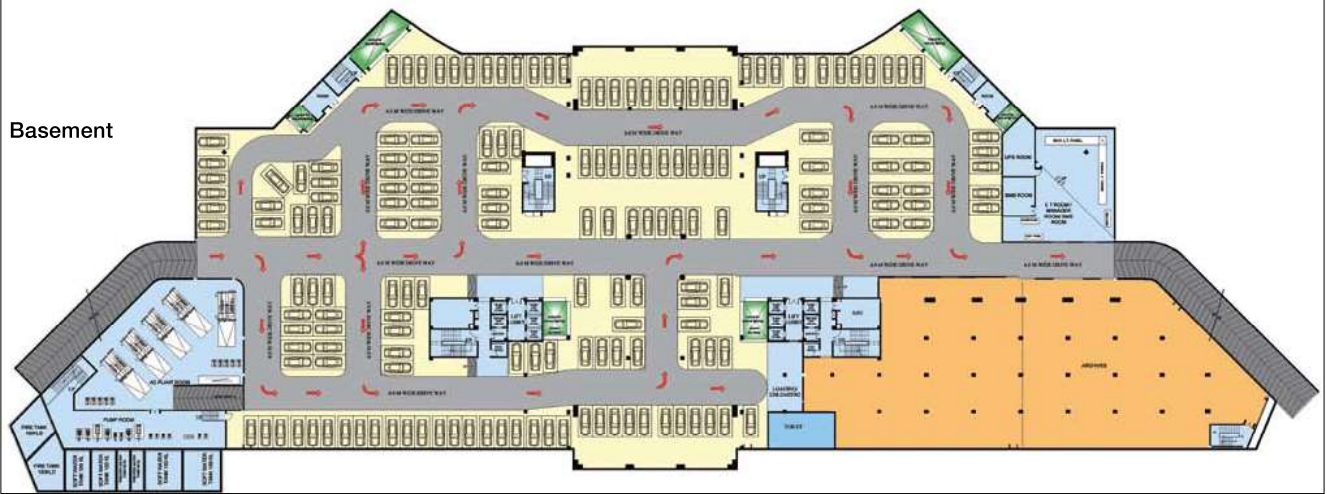
01-08-17

Completion Date

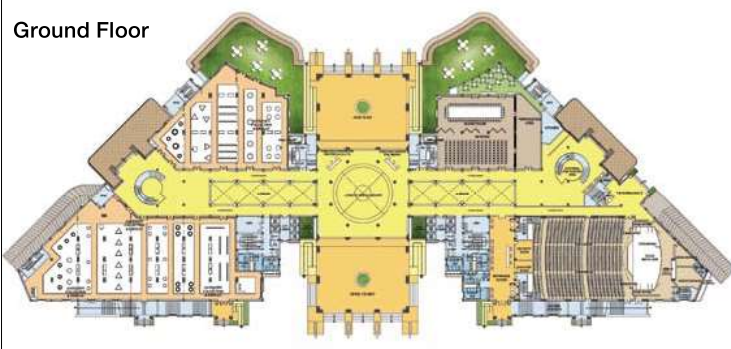
25-12-18



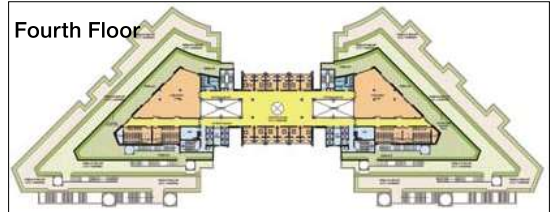
Basement



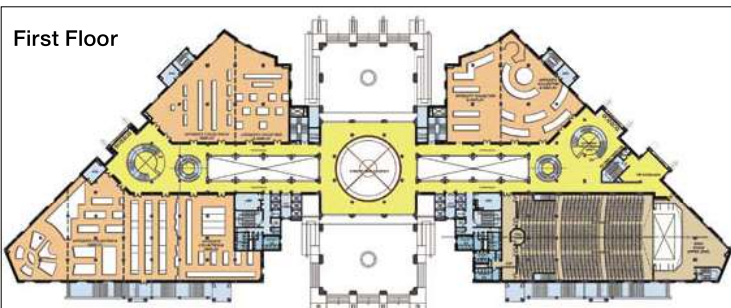
Ground Floor



Fourth Floor



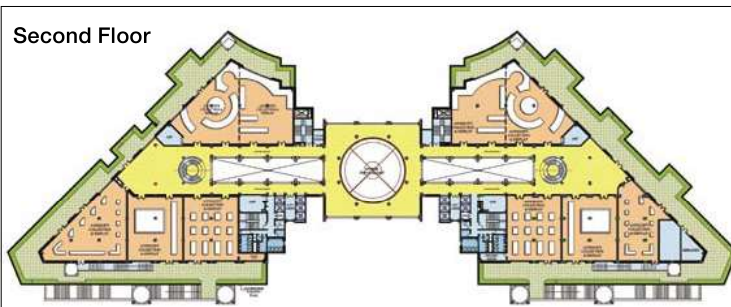
First Floor



Director's Residence Ground Floor



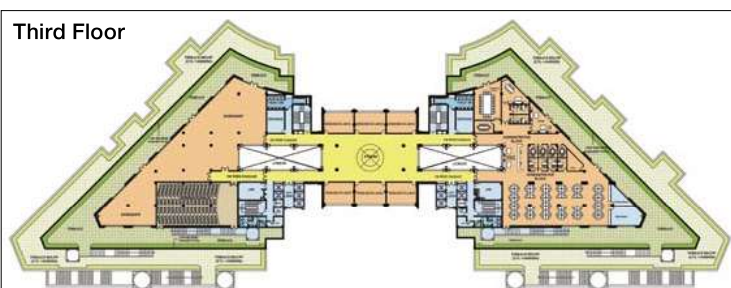
Second Floor

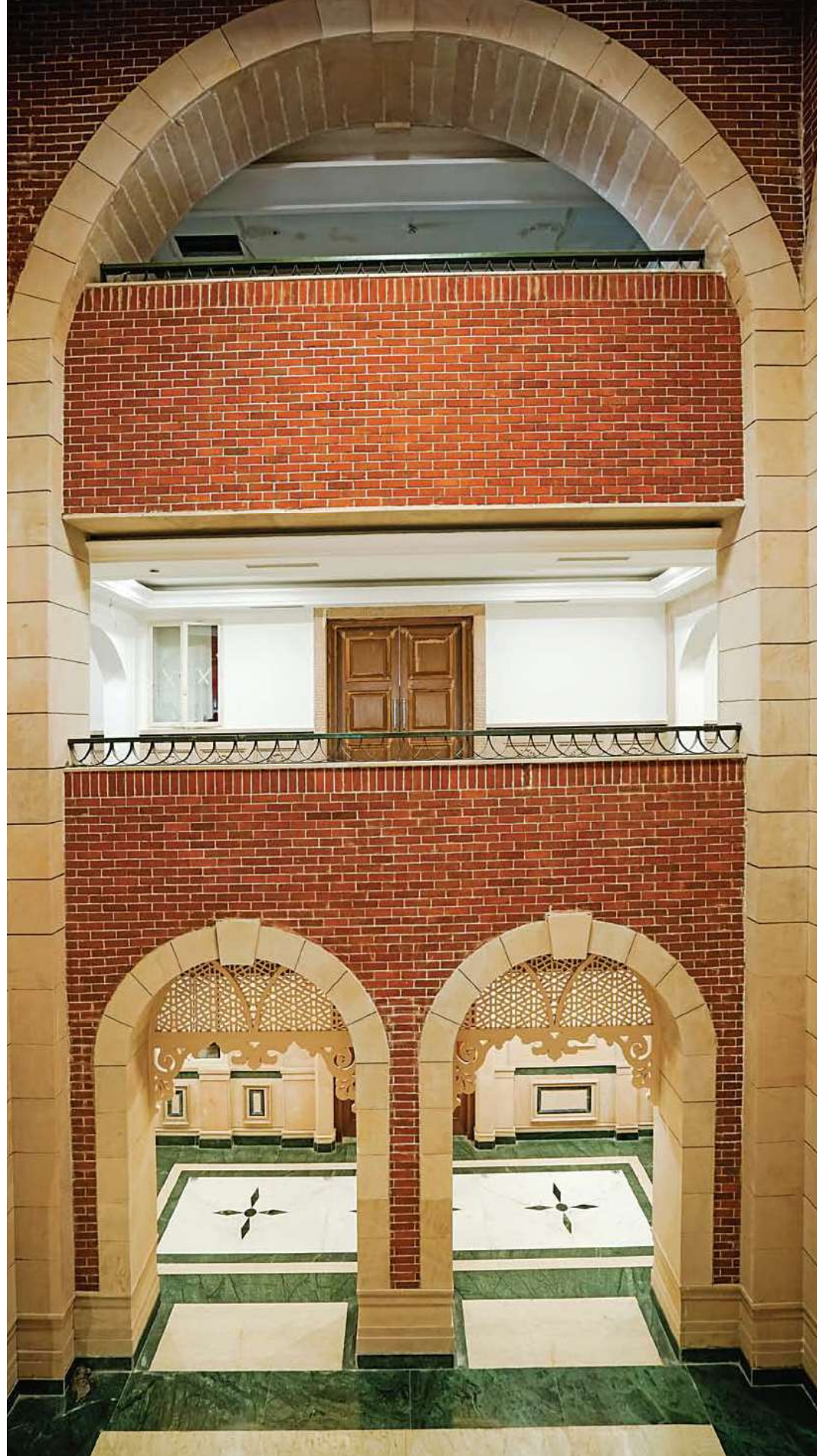


Director's Residence First Floor



Third Floor





Conceptualizing the structure

The central objective of Design Forum International was to establish a strong connection with archaeology. The architects beautifully captured this concept with the placement of the large stepped building conceived with grand outdoor steps and *chattris*. Sandstone and Delhi quartzite plinth were chosen as cladding materials and the whole scale is orchestrated to mimic the imposing nature of a fortress with few windows and mostly solid walls for the safety of the inhabitants. The dancing *chattris* and motifs add symbolism and visual drama. Placemaking – be it in the acentric flooring or the extravagant hallways – is a vital aspect of architecture. The central skylight atrium with its brick walls, stone arches, and geometric patterns on the floors transport the visitor into a themed environment steeped in history.

Nine broken arches have also been placed around an arrival plaza, symbolizing one's commencement of a journey into the past where we have to make sense of broken pieces of information. The scale of the arches is reminiscent of our glorious ancestors and the fact that they were capable of constructing grandiose, well-articulated buildings. It is a transitory space where one pauses and mentally aligns with the exploration of the museum that is to follow.

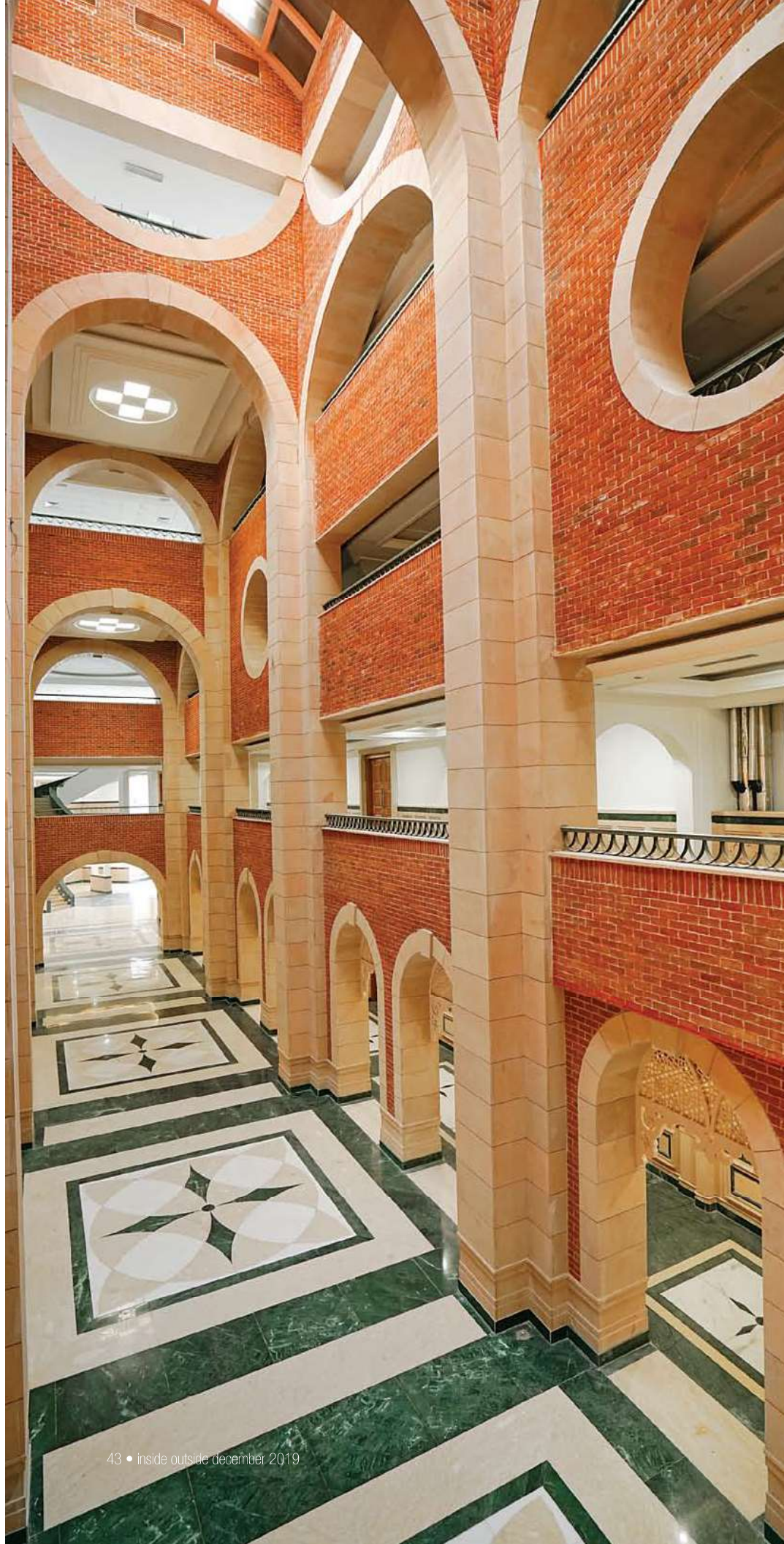
From the plaza, one enters into a heroic circular atrium set inside a square hallway creating a peripheral gal-

lery around it. This five-floor high space with a dome-shaped roof serves as the arrival hall and it is here that one is imbued with a sense of wonderment and admiration for the past. A help desk placed here guides the visitor through the viewing options, contents of the museum, audio guide facility, and cloakroom services.

The museum is spread over three floors and has two wings — this essentially created six sets of galleries, each representing a period of history and comprising of three halls within it. The amateur visitor needs to only view one of the halls per period; however, the more serious visitor would want to see two halls per gallery and the serious researcher would want to see all three. The basements serve as a parking space for 280 cars plus another 270 on the surface and place for school buses to park. The basements are well-lit with skylights and also have space for restoration of artefacts, and a proper zone for archives. Above the museum, there's one floor of administrative offices and training halls. A library and visiting researchers' office has been placed atop the dome and under the pyramid. Its position offers a fabulous vantage point and opens up views of the central open space and large greens in the front of the campus.

Sustainable structure

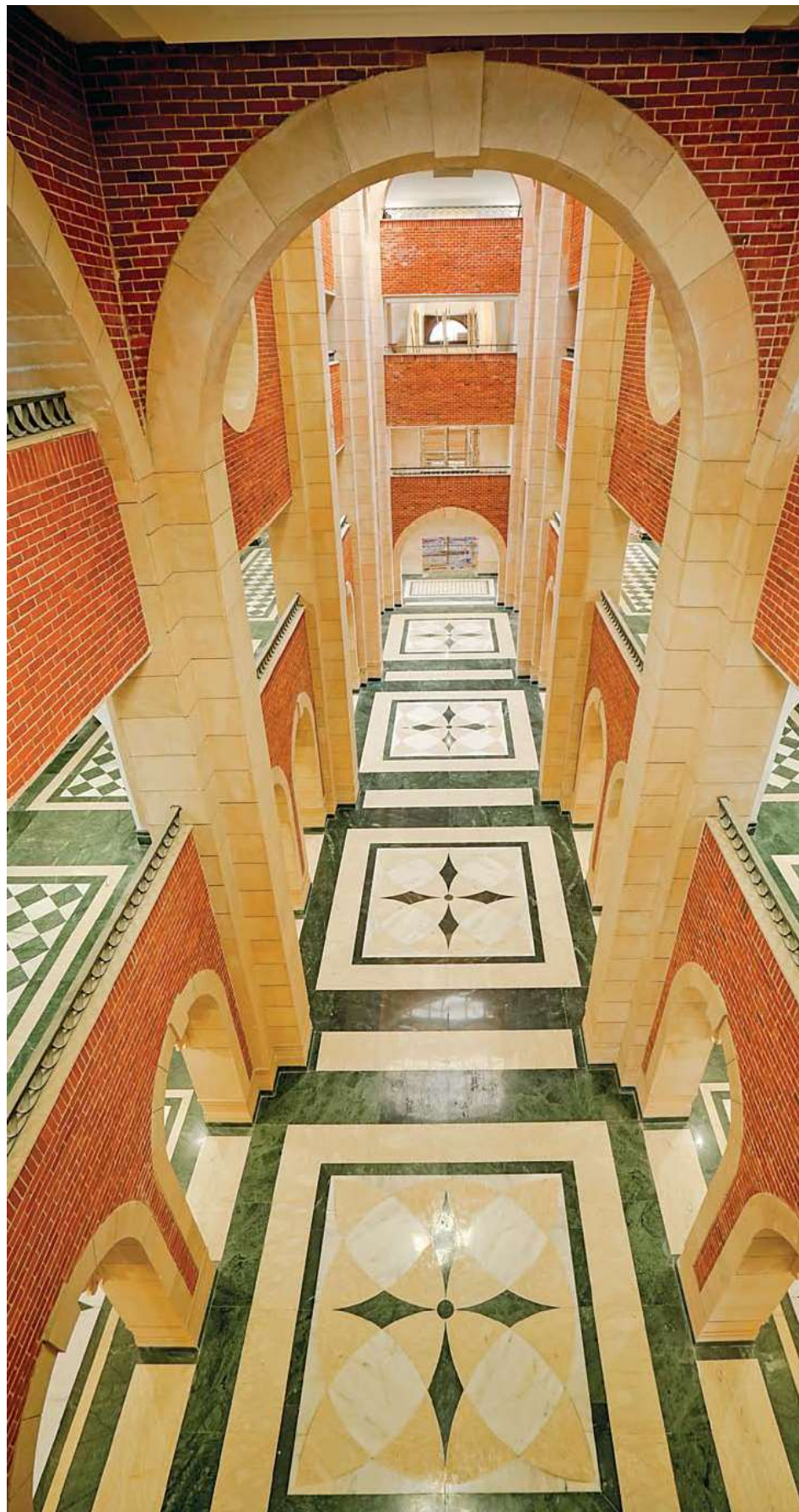
Amidst environment exploitation, the institute establishes a new take on design and architecture by weaving the





The archways and hallways are both aesthetically appealing and offer airways in order to maintain the soulful existence of the structure.





institution



The solar elements light up the unique nook and corners of the building giving it both energetic and vibrant appeal.



green landscape. The design is cost-effective and space-efficient to optimize the use of the built environment. The lush green campus has also been planted with indigenous trees all along the periphery in two layers to

create biomass for generating oxygen. An artificial lake not only adds charm to the property but also captures the run-off water, since the water table is high; the lake with stone pitching thus acts as a repository. The cam-

pus is well lit and is energy efficient as it employs solar energy for common areas and exterior lighting. The tertiary STP ensures the recycling of water for flushing, air-conditioning, and horticulture. Rainwater harvesting using a lake, the use of double-glazed windows and the recycling of waste materials are some other green perks of this building.

This institute, which is a class apart, is an architectural marvel that has done everything right. From sustainable methods to archival concepts, it is an amalgamation of nature and aesthetics crafted exquisitely in the land of Uttar Pradesh. Students and faculty will undoubtedly make lasting memories as they speak in the hallways and explore the greenways.