

# ARCHITECTURE+DESIGN

A N I N D I A N J O U R N A L O F A R C H I T E C T U R E

ISSN 0097-0229



## DECODING LUXURY

with  
*Poonam Mehta  
&  
Akash Mehta*

DESIGNED FOR THE PEOPLE BY

GOONMEET SINGH CHAUHAN HIMANSHU PATEL MARIA CLAUDIA CLEMENTE  
FRANCESCO ISIDORI QIU JIANG SOURABH GUPTA



# IN HARMONY WITH THE URBAN HISTORIC FABRIC

**Project:** Vanija Bhavan, New Delhi; **Architects:** Design Forum International (DFI)

The project designed by DFI, celebrates cultural diversity and historical identity of Lutyens Delhi while establishing its own identity and distinct character, along with serving the functional needs.

The strength of departments involved in commerce-related activities has exceeded two thousand people, creating the need to rent out additional space around Udyog Bhawan. Due to the availability of land owned by the Directorate General of Supplies and Goods (DGS&D) near Central Vista, the government had decided to bring these departments together under the umbrella of a single space serving all purposes. This led to the conception of Vanija Bhavan as headquarters for the Ministry of Commerce.

Lying adjacent to the Rajpath, abutting the Akbar Road, the office complex is designed to house the offices of the Ministers of Commerce, Secretary's office, and accommodate around 1800 to 2000 officers. The building lies on the C-Hexagon in Lutyens Delhi within close proximity to prominent

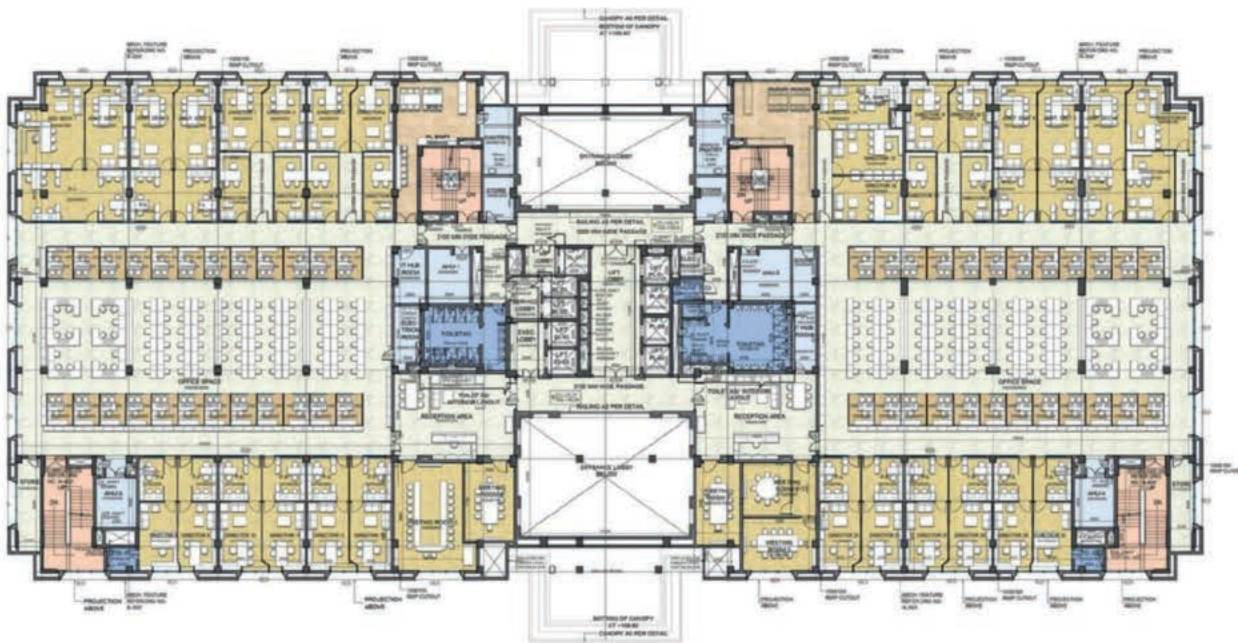






BASEMENT FLOOR PLAN

The new architectural template is designed to synergise with the existing morphology and urban fabric of Lutyens Delhi, while establishing its own identity and distinct character, along with serving the functional needs.



FIRST FLOOR PLAN



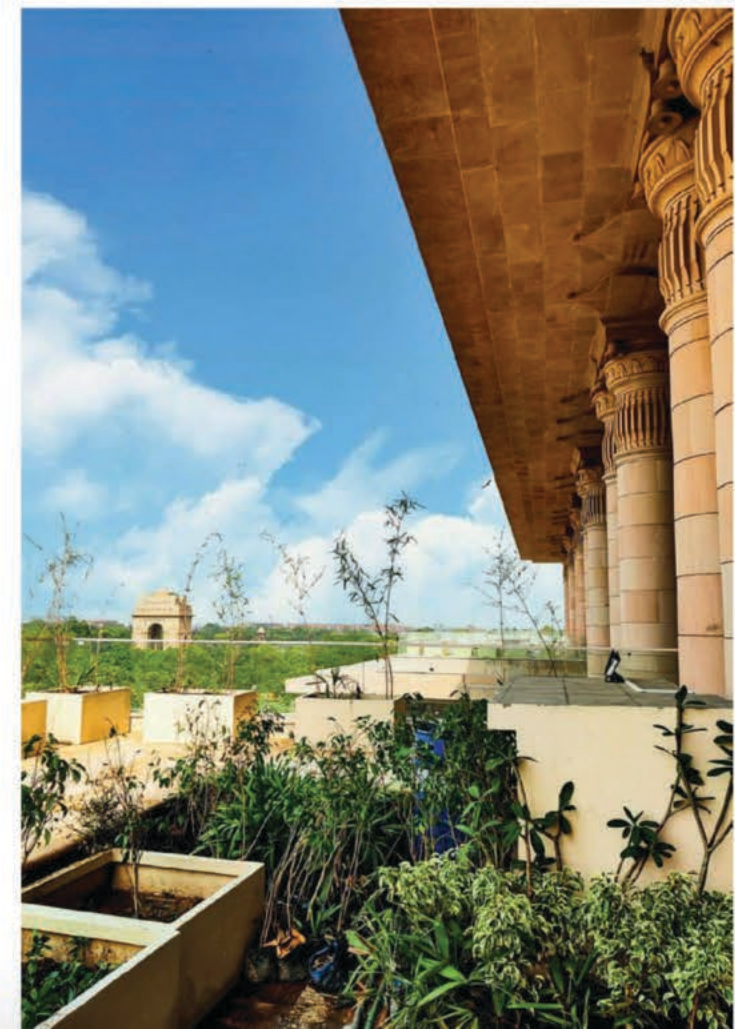
**GOONMEET SINGH CHAUHAN,**

Founder & Partner, Design Forum International

*Goonmeet Singh Chauhan is an architect, urbanist, author and a futurist with boundless enthusiasm to push the frontiers of possibility and bring forth 'Newness' that is both 'Delightful' and 'Useful' into all that he does. As the Founding partner at DFI, he believes in an architecture that is unshackled by 'isms'. With a focus on creating design with a purpose, he is passionate about transforming the lives of people and truly believes that our shared destiny can be altered through pragmatic ideation and collective action fairly rapidly.*

heritage buildings such as India Gate, Hyderabad House, Jaipur, National Gallery of Modern Arts and Bikaner House, amongst others. By virtue of the location itself, one has to be conscious of the materials, motifs and scale incorporated in the design intervention. Designing within this context, therefore, brings challenges along; one such challenge is to synergise the new built massing with the existing urban historic identity, enabling a coherent distinction. Acknowledging this, the project is envisaged to be a landmark for public architecture that propels and propagates its identity without creating a great departure from its overall immediate urban historic context.

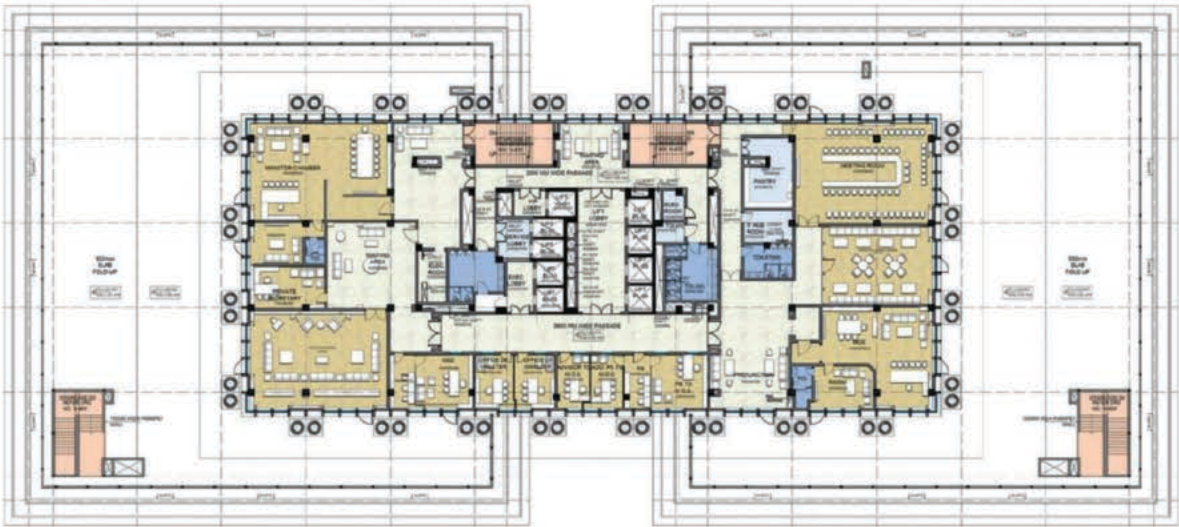
The new architectural template is designed to synergise with the existing morphology and urban fabric of Lutyens Delhi, while establishing its own identity and distinct character, along with serving the functional needs. The design critically also propels the local flavours into the material fabric of the new structure. Being conscious of the context that it belongs to, this modern heritage building is developed on a 4.38-acre plot of land. The construction of the building uses Dholpur and Agra sandstones and incorporates grand stone columns similar to those found in Rashtrapati Bhawan. The resulting office is a monument that exudes grandeur and reflects its intended representation and function.



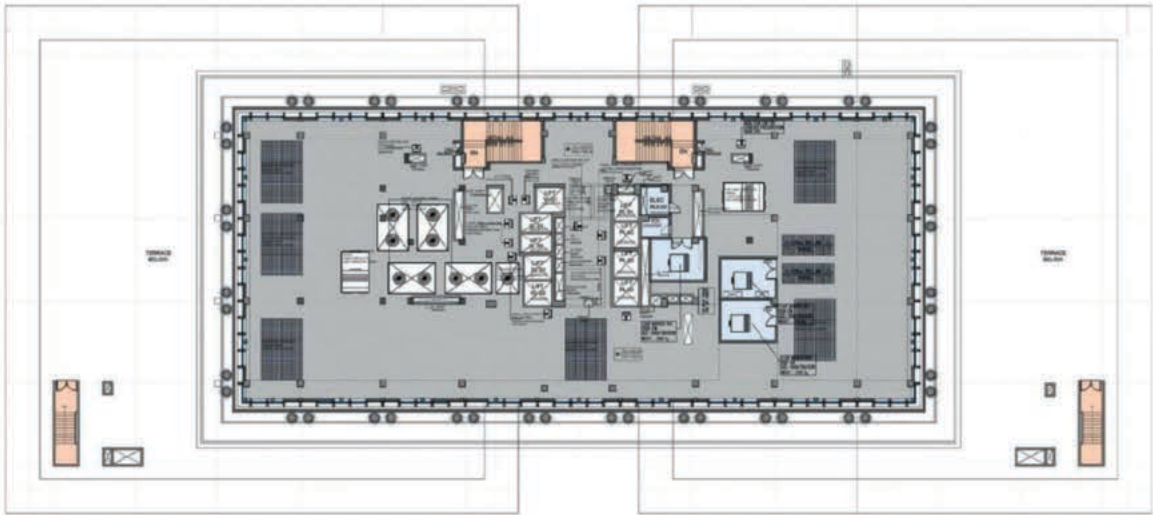




THIRD FLOOR PLAN



FIFTH FLOOR PLAN



TERRACE FLOOR PLAN





This aspirational quality lends itself to a significant impact on the beholder. The project supports local artisans, showcasing their art and technological craftsmanship.

The building has been designed as a Green building and has received a 4-star GRIHA rating. It is universally accessible to cater to differently-abled persons. The design has considered the requirements of confidentiality and high-security needs. The building's construction has been completed with modern steel structure and post-tension slabs technology, and it took only 18 months to finish, a record time for construction of this scale. The eastern wing on the ground floor provides well-designed facilities, including meeting lounges, meeting rooms for 60, 30, and 16 people, and a mini-convention facility for delegations of up to 150 people. The mini-convention facility opens onto a refreshment zone, which, in turn, leads to a ceremonial lawn, offering an excellent recreational space for delegations. In addition, a small amphitheatre accommodating 100 persons is attached to the building for presenting cultural performances to foreign commerce delegations.

Further, the building includes a summit room that can accommodate 100 persons, located on the top floor. This summit room opens onto a dining room, providing an exceptional dining experience which opens onto a landscaped terrace, with a picturesque view of India Gate. The building also provides ample parking space, for 400 cars in two basements and 50 cars on the surface, designated for visitors. With these comprehensive facilities, Vaniya Bhawan is an ideal location for hosting official meetings, conventions and cultural performances while accommodating the practical needs of the visitors.

The project is more than just an office complex; it is a modern heritage building that celebrates the cultural diversity and historic identity of Lutyens Delhi. By using local materials and employing traditional techniques, the building design blends harmoniously with the surrounding architecture, while offering its own distinctive character. As a result, it stands as a monument to India's rich cultural heritage and technological craftsmanship, while also providing a state-of-the-art facility for hosting official meetings, conventions and cultural performances. It is thus a landmark, from its conceptualisation to its inception that is in sync with the architect's ideology of people-first, and contributes to their broader objective of nation building. ✚

#### FACTFILE

**Client:** Vaniya Bhawan

**Design Team:** Goonmeet Singh Chauhan, Tanvi Puri, Anuj Prabhakar

**Plot Area:** 4.388 acre

**Built Up Area:** 4.3 lakhs Sq Ft

